

**Report Date:** 06.December 2016

**Testing Period:** 2014 - 2016

**Name:** Liqui Moly Oil Additives Service

**Objective:** Before and After Dyno Test Results

**Test Vehicle:** 2009 Mercedes Benz SL63AMG  
Mileage: 98824 KMS  
Transmission: Automatic 7 speed  
Measured in 4<sup>th</sup> Gear Ratio 1:1  
Ambient Temperature: 10°C

### 1) Maintenance Service & Engine Treatment Performed in End 2014

- Engine Flush before Oil Change with Liqui Moly *Pro-Line Engine Flush*.
- Lube, Oil and Filter Service with Liqui Moly *Leichtlauf High Tech 5W40* Full Synthetic Motor Oil.
- Engine Treatment with Liqui Moly *Cera Tec* and Liqui Moly *Motor Oil Saver*.

### 2) Pre-Treatment Testing in 2014

- Install car on dyno.
- Performed drive train losses and calibrate dyno speed (*Attachment 1*).
- Performed income performance test (*Attachment 2*).

### 3) Maintenance Service & Engine Treatment Performed in End 2016

- Engine Flush before Oil Change with Liqui Moly *Pro-Line Engine Flush*.
- Lube, Oil and Filter Service with Liqui Moly *Leichtlauf High Tech 5W40* Full Synthetic Motor Oil.
- Engine Treatment with Liqui Moly *Cera Tec* and Liqui Moly *Motor Oil Saver*

### 4) Post-Treatment in End 2016

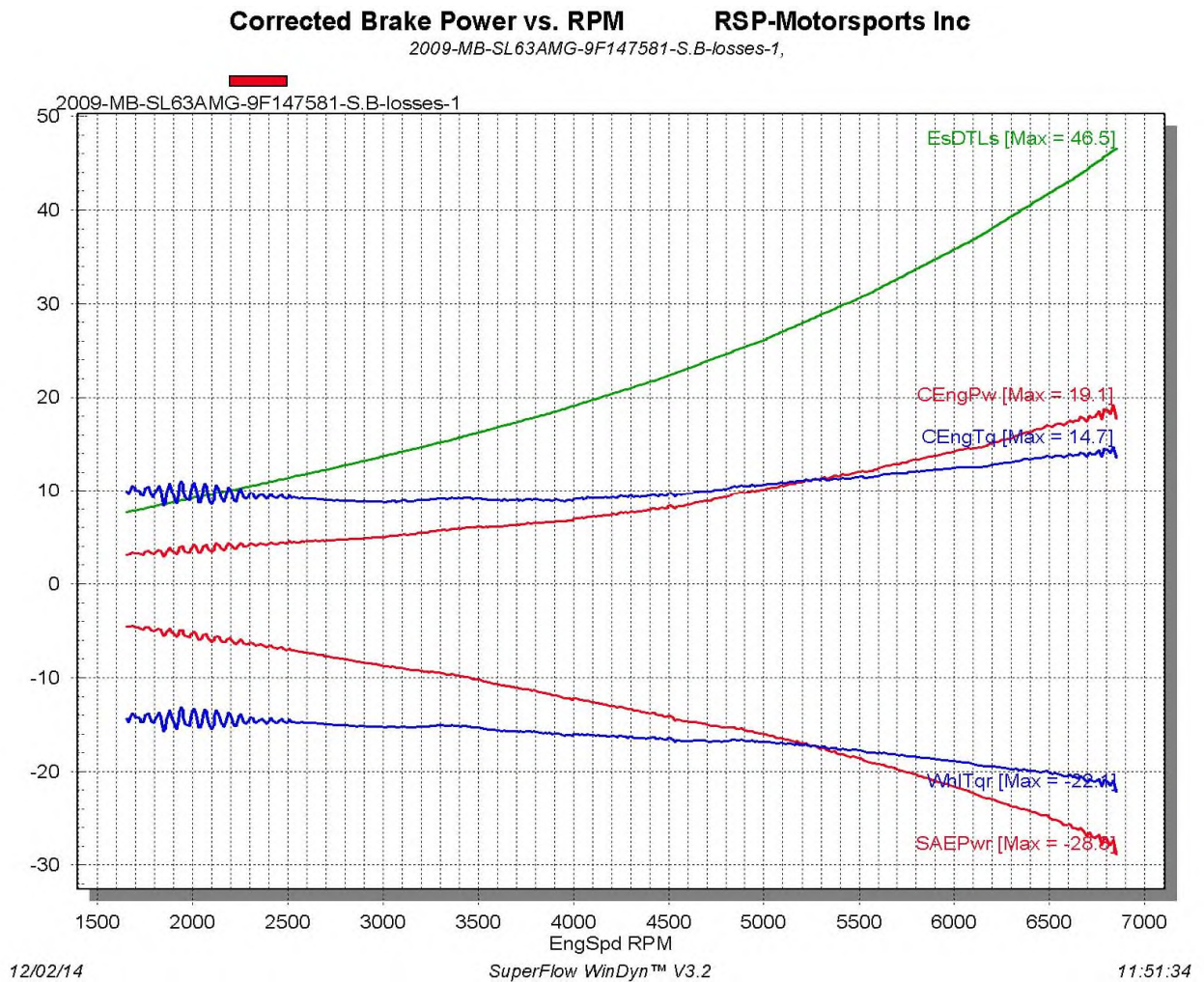
- Install car on dyno.
- Performed drive train losses and calibrate dyno speed (*Attachment 3*).
- Performed income performance test. (*Attachment 4*)

## 5) Test Results 2016

At Full Load, the overall gain in Engine HP is 38.5HP (+9.1%) and Torque 37.9ft/lbs (+9.8%) and is consistent over the complete engine speed range. (*Attachment 5*)

### Attachment 1

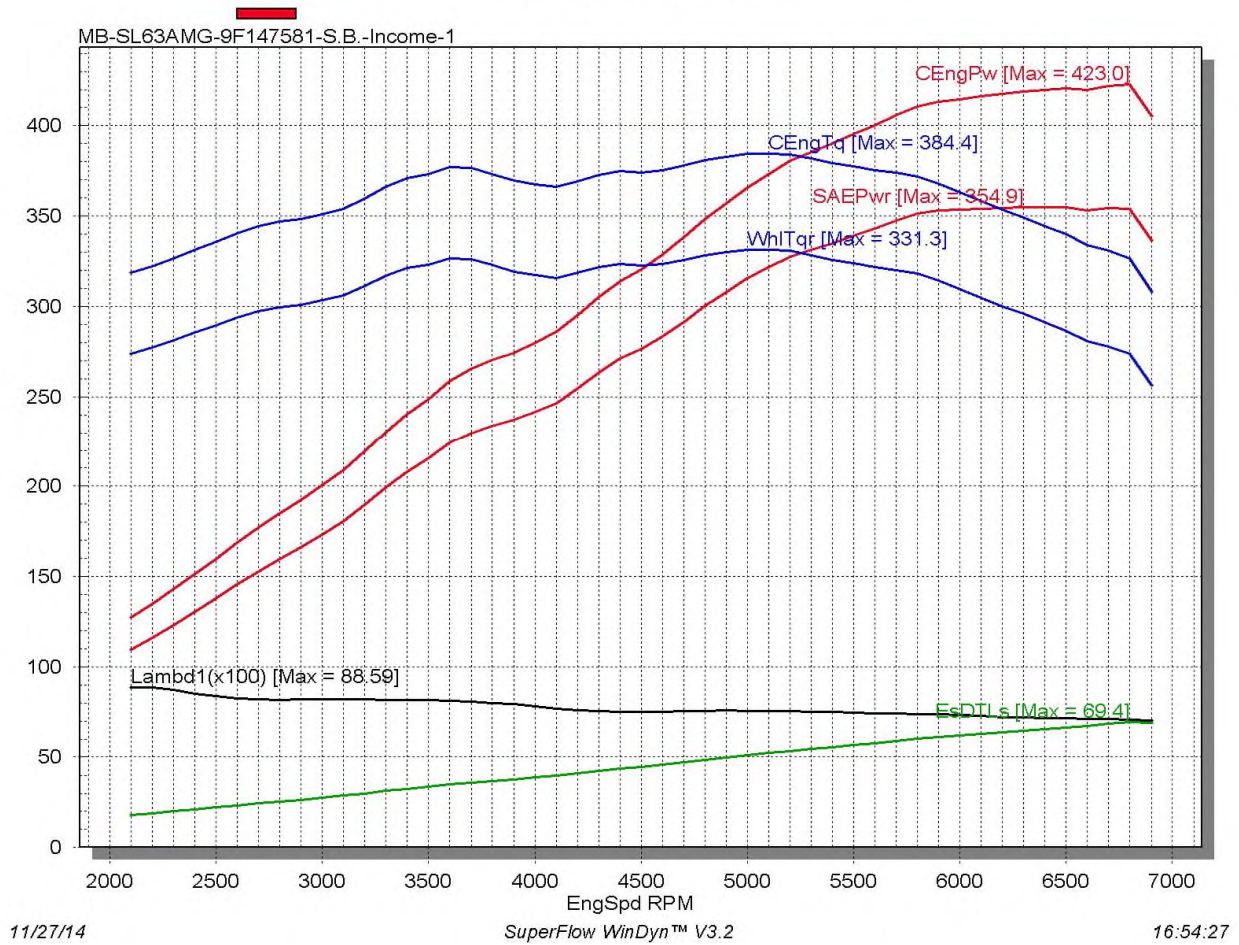
### Dyno losses 2014



Attachment 2

**Income Performance Test 2014**

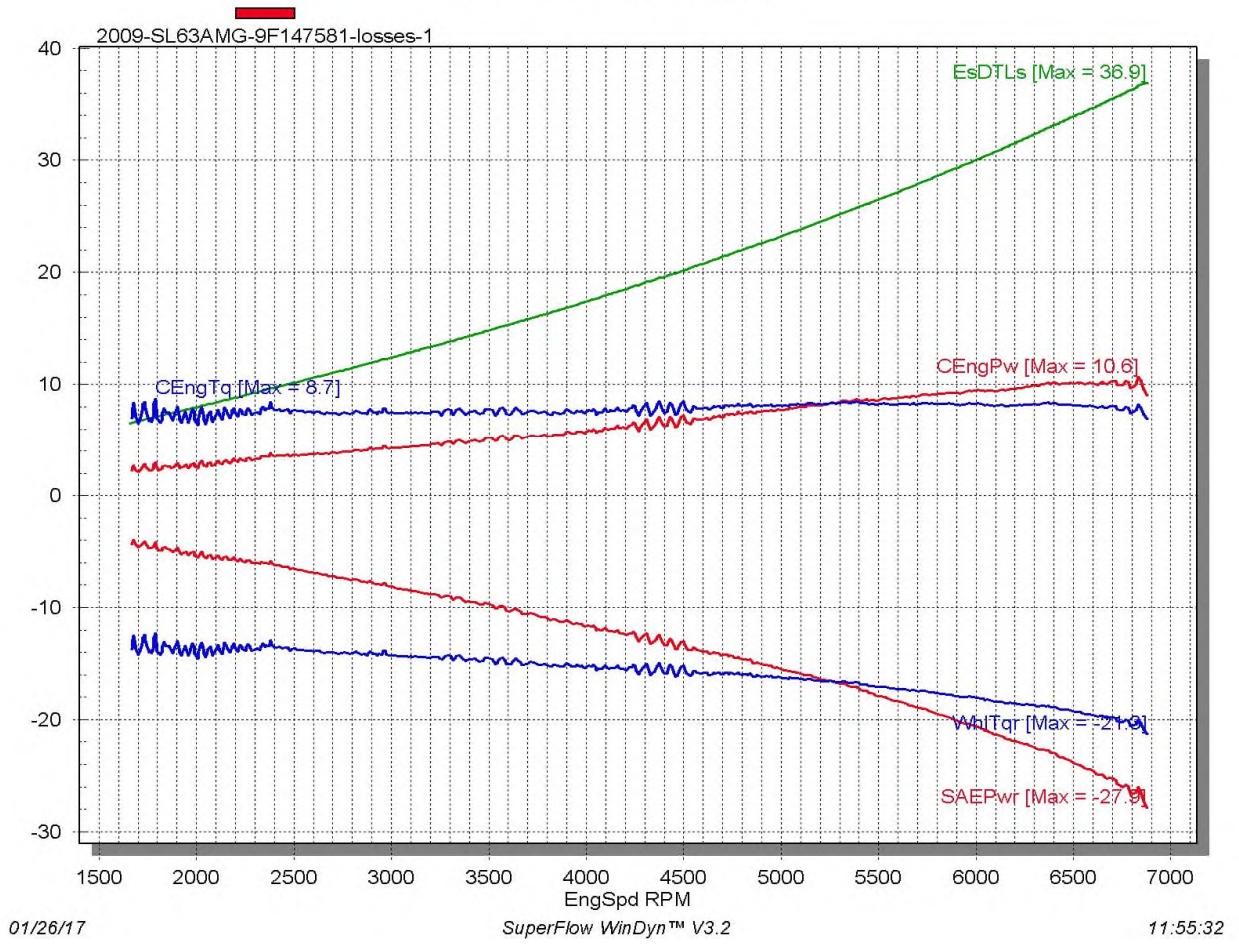
**Corrected Brake Power vs. RPM**      **RSP-Motorsports Inc**  
MB-SL63AMG-9F147581-S.B.-Income-1,



Attachment 3

**Dyno losses 2016**

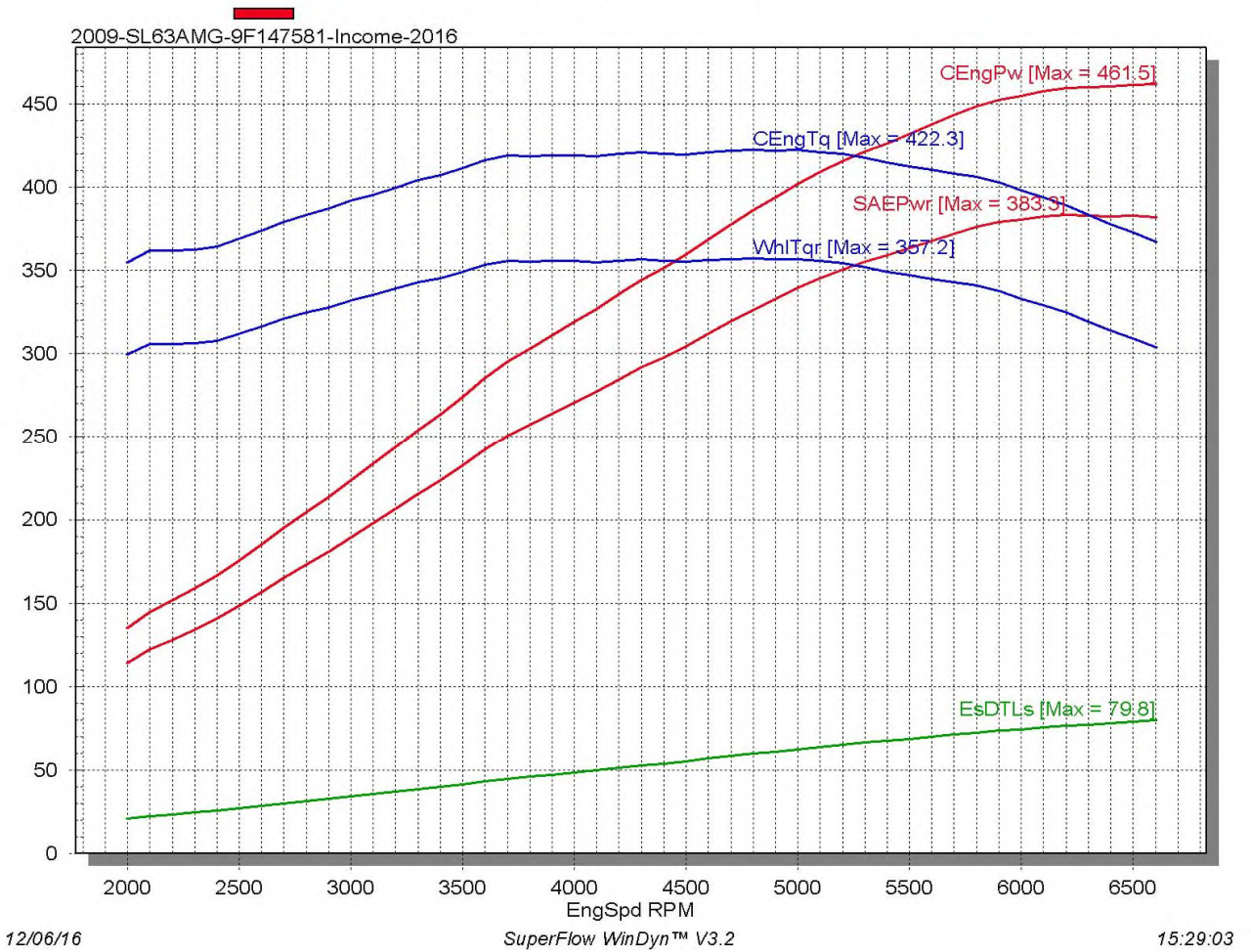
**Corrected Brake Power vs. RPM**      **RSP-Motorsports Inc**  
2009-SL63AMG-9F147581-losses-1,



Attachment 4

**Income Performance Test 2016**

**Corrected Brake Power vs. RPM**      **RSP-Motorsports Inc**  
2009-SL63AMG-9F147581-Income-2016,

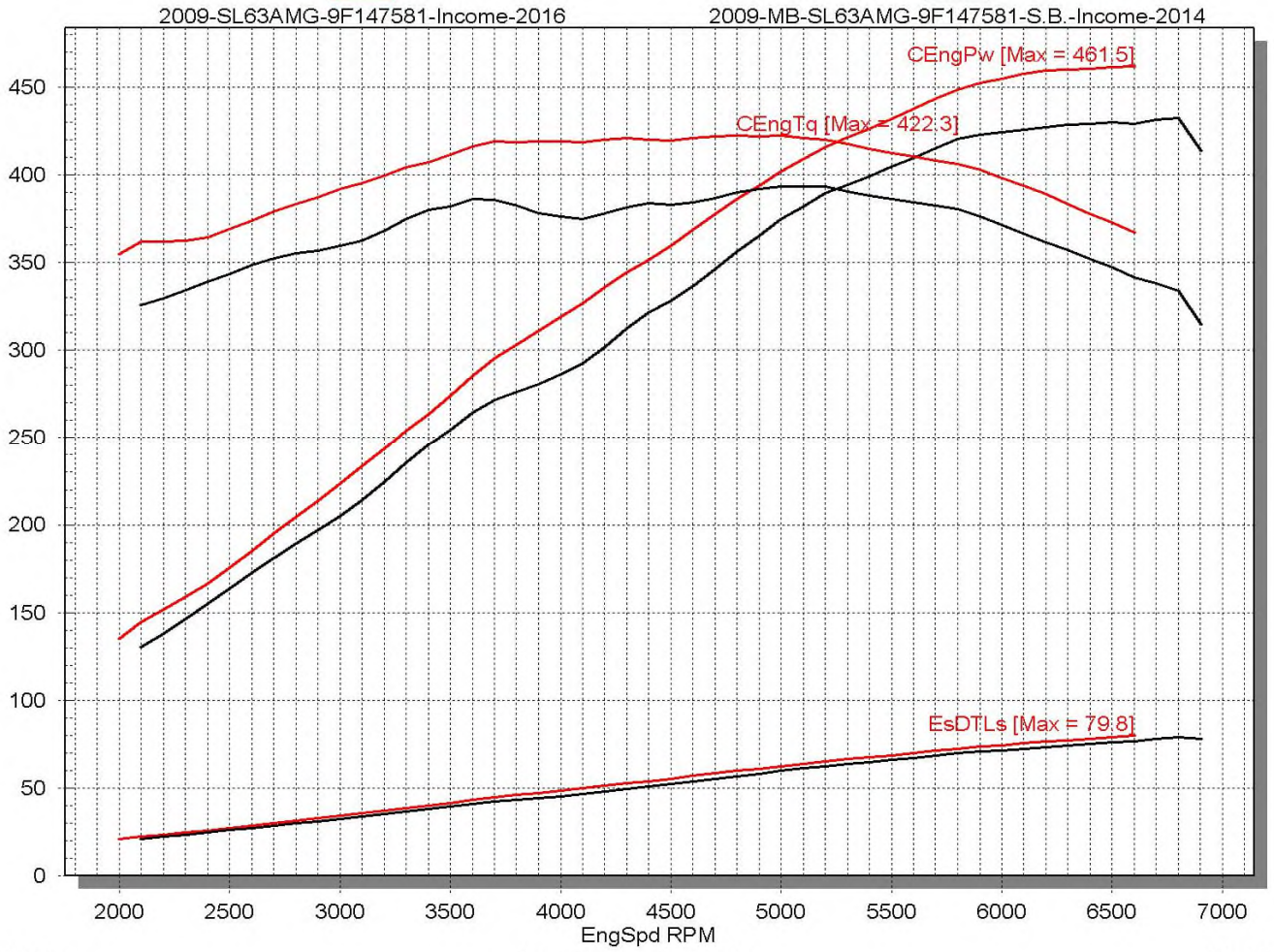


# Before and After 2014/2016

## Corrected Brake Power vs. RPM

RSP-Motorsports Inc

2009-SL63AMG-9F147581-Income-2016, 2009-MB-SL63AMG-9F147581-S.B.-Income-2014,



12/06/16

SuperFlow WinDyn™ V3.2

15:24:34

*RSP-Motorsports Inc.  
15 Springfield Way, Kilworth/Komoka, ON N0L 1R0*

*Tel: 519-474-7700  
Fax: 519-474-7702*

*Web: [www.rspmotorsports.com](http://www.rspmotorsports.com)  
Email: [info@rspmotorsports.com](mailto:info@rspmotorsports.com)*